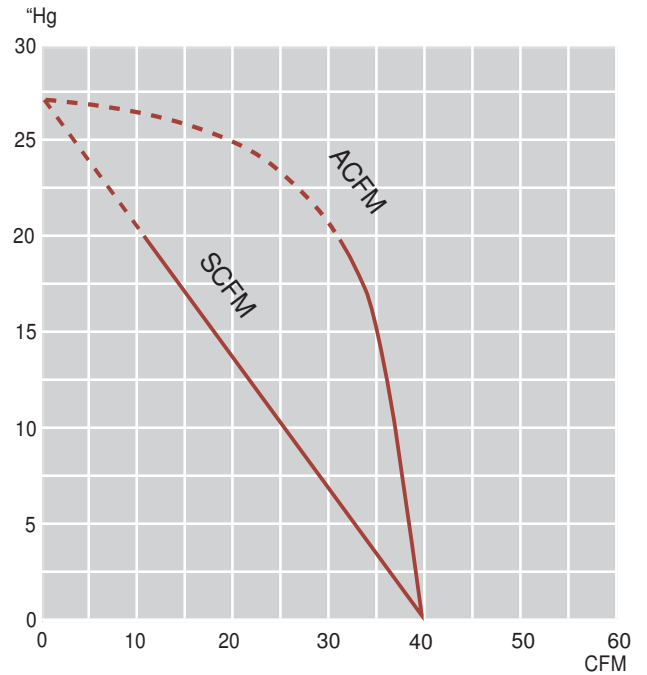




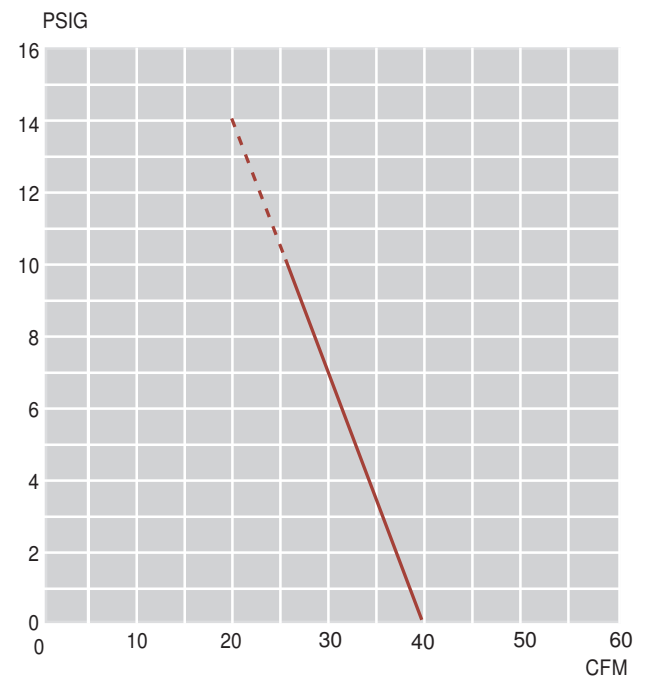
Performance Curves: 60Hz Vacuum



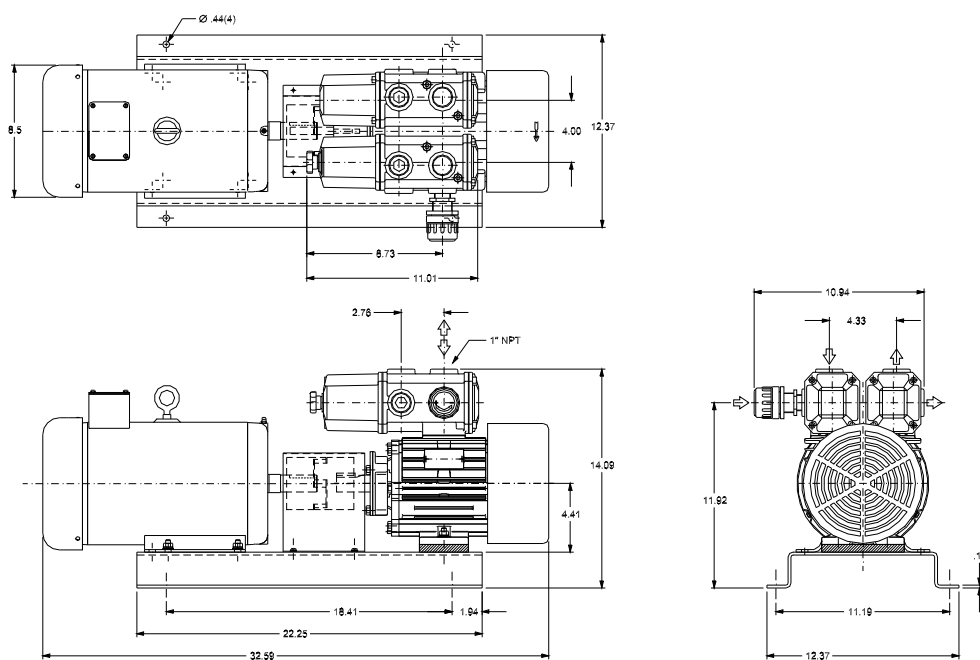
Features:

- Oil free
- Maintenance free
- Operates quietly - maximum 70 dB (A)
- Cooler running outboard bearings increase service life
- Built-in particulate filters and silencers.
- Compact light weight design
- Handles vacuum and/or pressure applications
- Ideal alternative to standard oil sealed rotary vane pumps

Pressure



Dimensions: (inches)



Notes:

- a: Standard voltage for three phase pump is 208-230/460V 3ph 60Hz.
- b: Standard voltage for single phase pump is 115/230/1ph 50/60Hz or 115V/1ph 60Hz or 230V/1ph 60Hz
- c: All pumps available in 50Hz frequency and with other voltages.

Specifications subject to change without notice.
Please contact factory for specification updates.

Specifications: (Vacuum)

| Model Number | Motor | RPM | HP | CFM | Max. Hg" | LBS | Kgs |
|------------------|--------------|------|----|-----|----------|-----|-----|
| KRX7A-SS-1701-G3 | w/o Motor | | | 40 | 27.5" | 115 | 52 |
| KRX7A-SS-1701-G1 | 208-230/460V | 1200 | 2 | 40 | 27.5" | 165 | 75 |
| KRX7A-SS-1702-G1 | 115/230V | 1200 | 2 | 40 | 27.5" | 180 | 82 |

Specifications: (Pressure)

| Model Number | Motor | RPM | HP | CFM | Max. PSI | LBS | Kgs |
|------------------|--------------|------|----|-----|----------|-----|-----|
| KRX7A-SS-1770-G3 | w/o Motor | | | 40 | 14psig | 115 | 52 |
| KRX7A-SS-1770-G1 | 208-230/460V | 1200 | 2 | 40 | 14psig | 165 | 75 |
| KRX7A-SS-1771-G1 | 115/230V | 1200 | 2 | 40 | 14psig | 180 | 82 |