

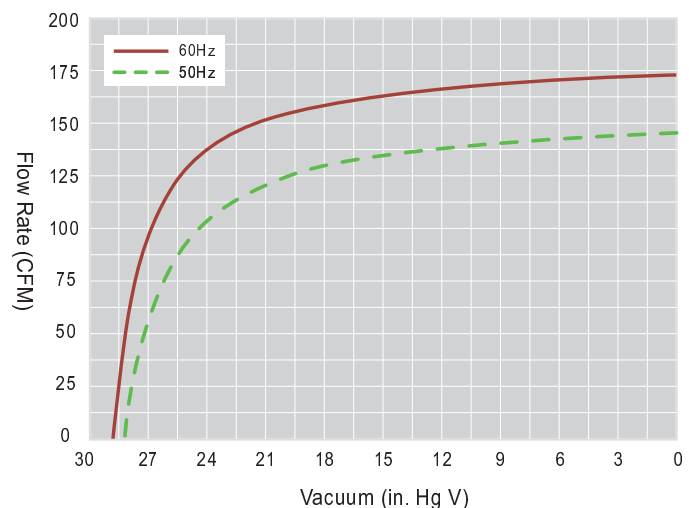


Quality construction and design features make KCP positive displacement rotary claw vacuum pumps extremely reliable and easy to maintain. The KCP's non-contact design reduces internal wear, and air-cooled operation eliminates the need for cooling liquid. The unit is also dry-running, so no sealing or lubricating oil is needed in the pumping chamber.

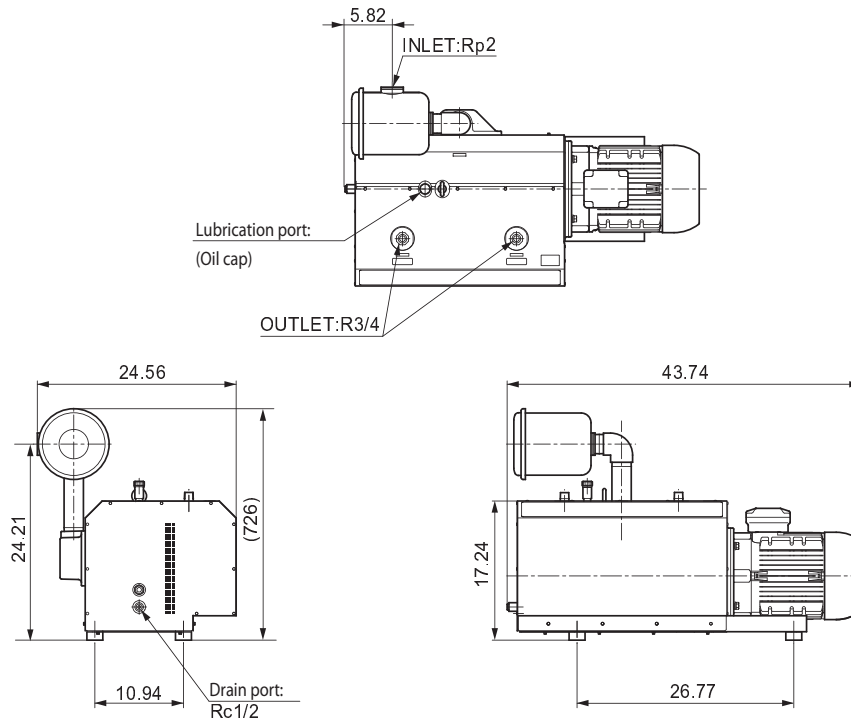
Claw shaped rotors inside the pump housing rotate in opposite directions, compressing air and discharging to the atmosphere through a silencer. The two rotors are synchronized by gears that are oil lubricated to facilitate a long gear life.

- Non-contact design
- Dry (oil-free) pumping chamber
- Air-cooled & Direct driven
- Simple, modular construction
- Suitable for variable speed applications

**Performance Curves**



### Dimensions: (inches)



### Specifications

<b>Power Frequency</b>	50 Hz	60 Hz
<b>Capacity (CFM)</b>	135	165
<b>Continuous Operating Vacuum (in. Hg)</b>	25.1	25.1
<b>Ultimate Vacuum (in. Hg)</b>	26.6	26.6
<b>Piping Connection Size (NPT)</b>	2"	2"
<b>Output Power (HP/RPM)</b>	7.5 HP/2900 RPM	7.5 HP/3500 RPM
<b>Rated Voltage</b>	200V/400V	208-230V/480V
<b>Weight</b>	507 lb.	507 lb.
<b>Operating Noise Level</b>	83 dB	84 dB