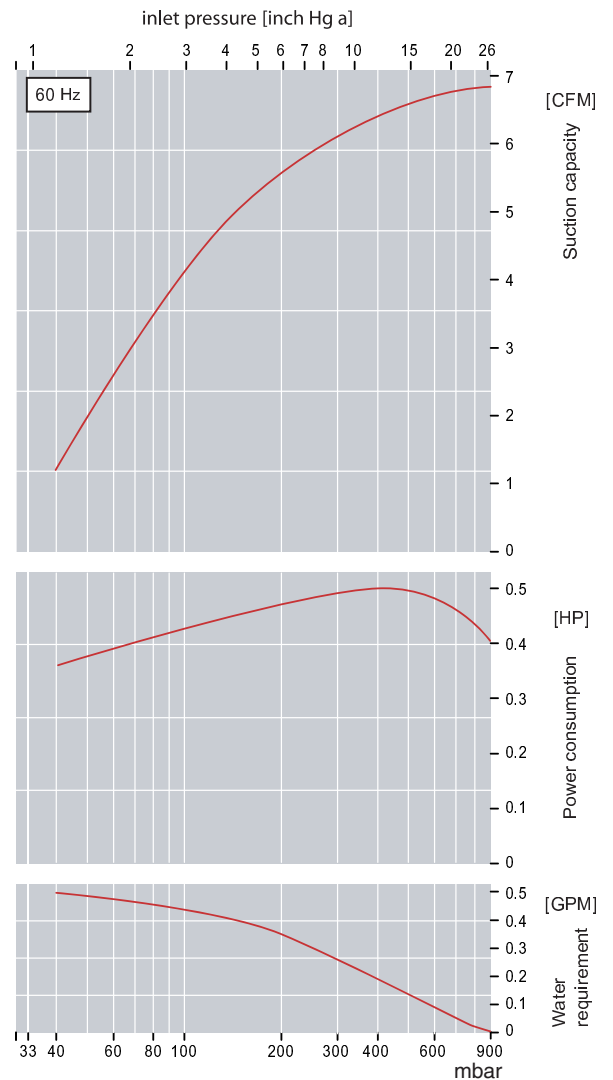
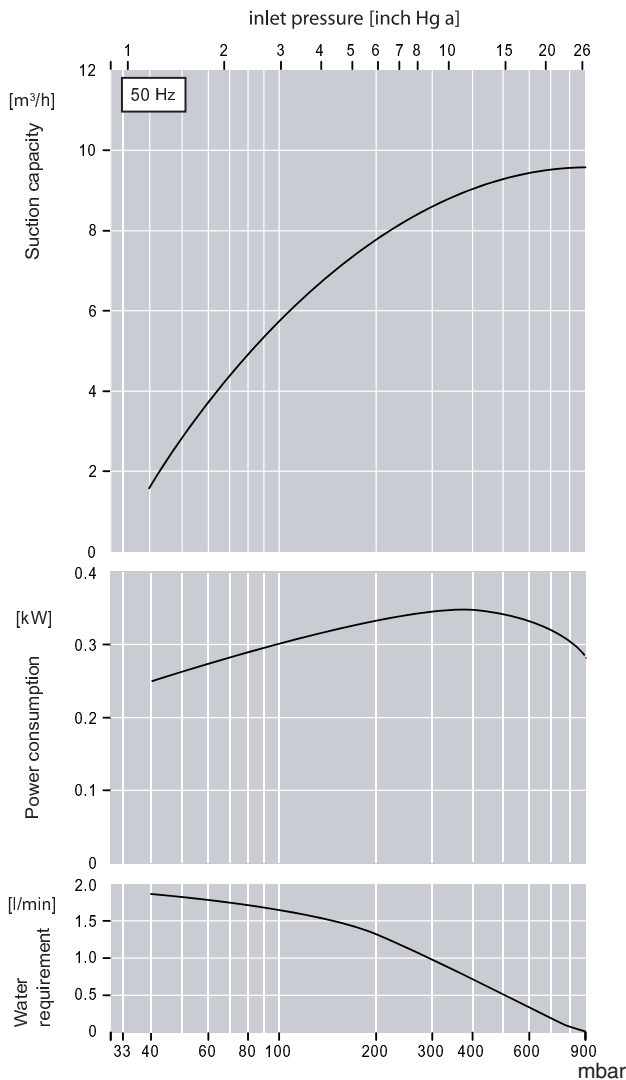


- More compact than conventional liquid ring pumps
- No belts, no couplings - alleviating problems with wear, alignment and belts
- Standard pumps have bronze housing and impeller and PTFE flap valve

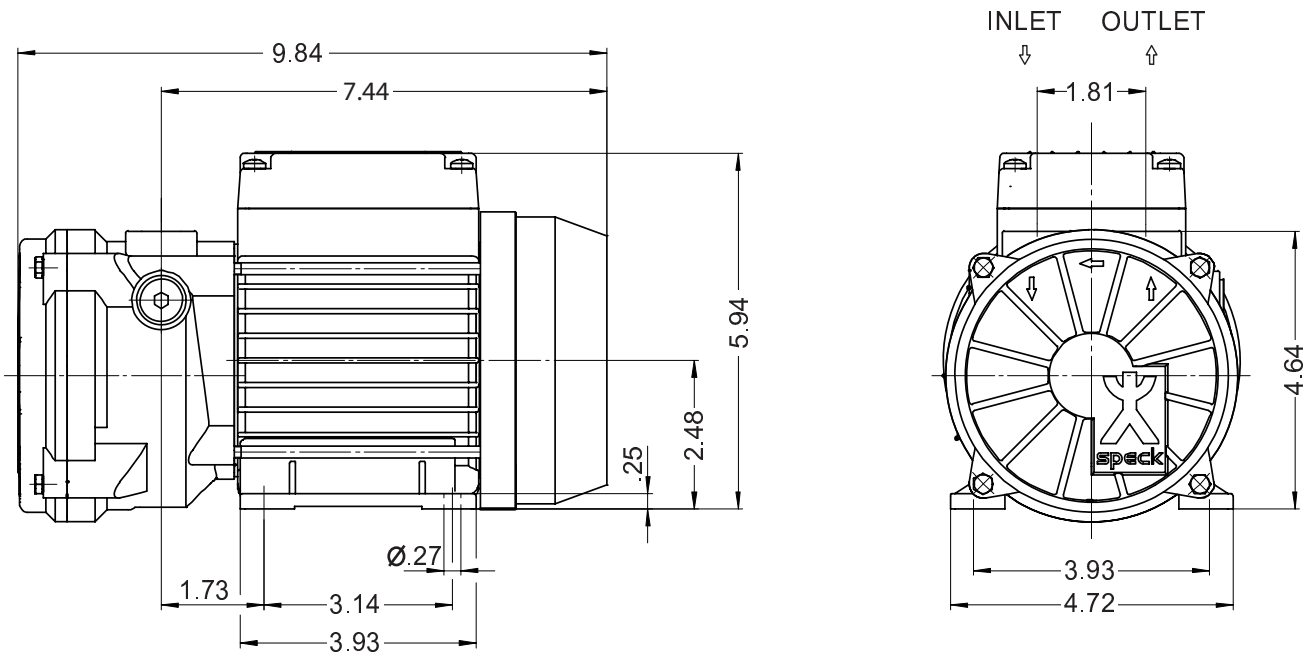
The Airtech 3AV Series closed-coupled Liquid Ring Vacuum Pumps are ideal for various applications that require continuous & quiet operation, a compact design and reduced power consumption.

The single stage, variable discharge port design provides efficient operation from 1 through 262 cfm for vacuum levels up to 29"Hg. The impeller's unique design of slower spinning curved blades reduces tip speed enhancing the life expectancy of the pump.

- Designed for heavy duty applications
- Manufactured to ISO 9001 standards
- Single face mechanical seal arrangement is standard



Dimensions: (inches)



Performance Data

Model	Rated H.P.	CFM	RPM	Voltage Range	Phase	Max. Amps	Seal Water (GPM)	Weight (lbs.)	Inlet/Outlet
3AVI 8.0006	0.7	6.7	3400	230	1	3.1	0.5	20	3/8"
3AVI 8.0013	0.7	6.7	3400	208-230/460	3	2.4/1.4	0.5	20	3/8"

The characteristics are applicable for compression of 20° C (68° F) dry air from inlet pressure to atmospheric pressure (1013 mbar / 30 inch Hg a) for nominal speed and drive with three phase motors. Ring liquid is water at 15° C (59° F). The tolerance of the suction capacity is -10% and of the power consumption is +10%. With different operating conditions characteristic curves change (e.g. differing gas operating liquid conditions, conveying of additional liquids and/or pumping of gas-steam mixtures).