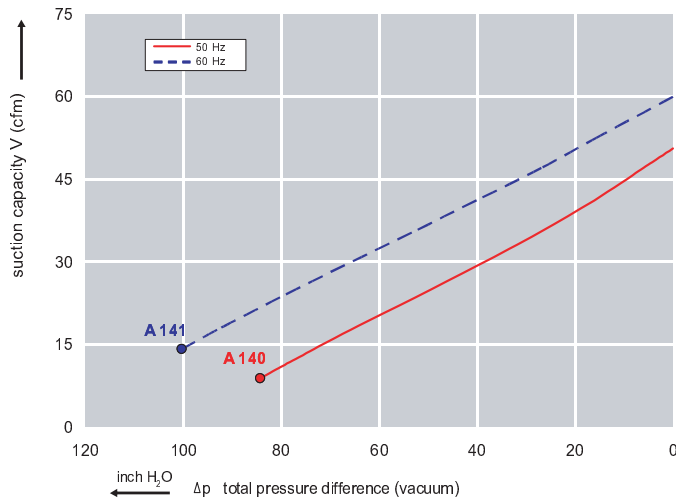




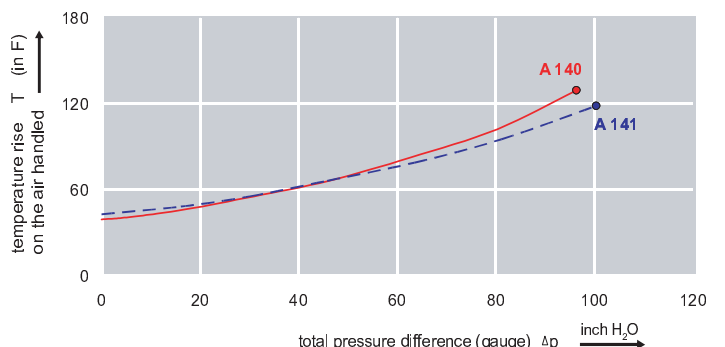
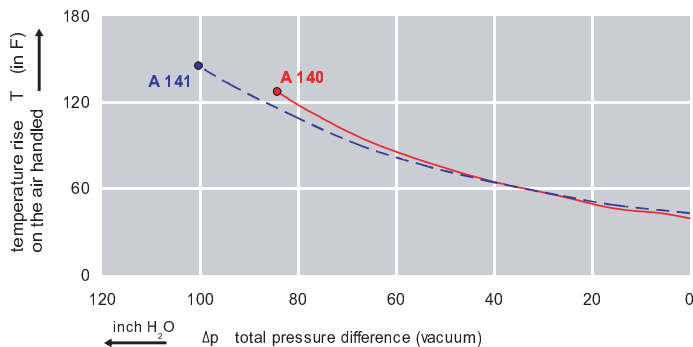
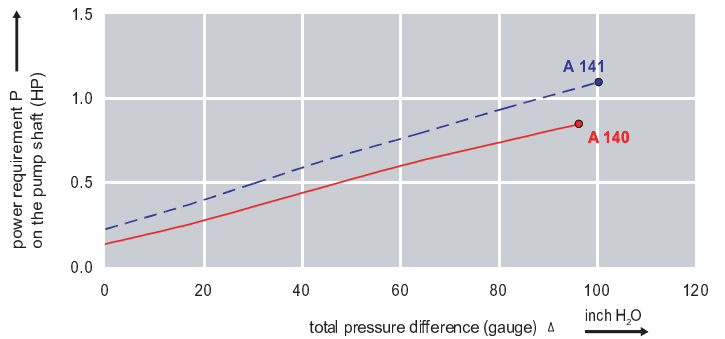
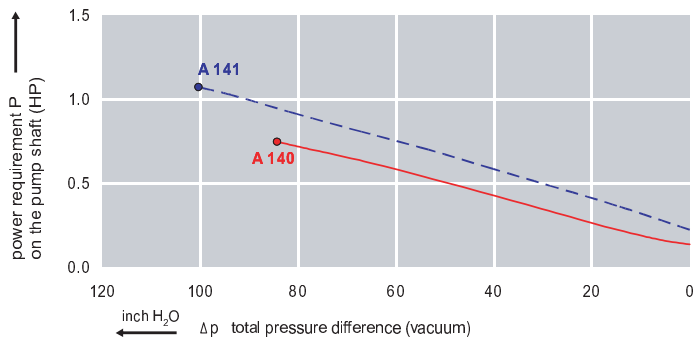
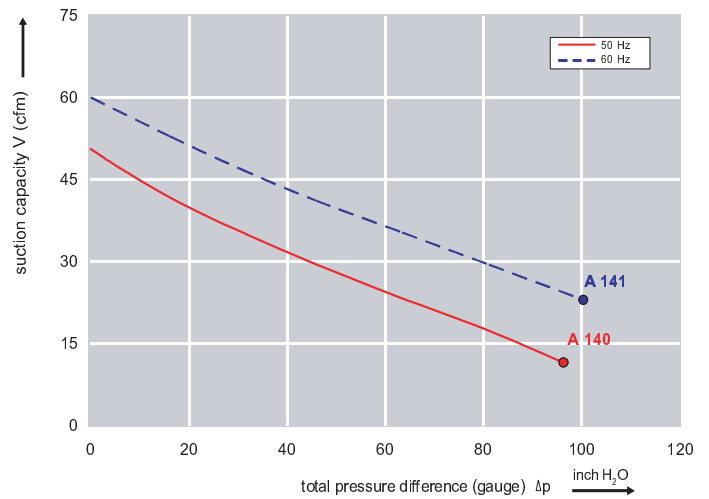
Features:

- Cooler running, outboard bearing provides maintenance-free operation
- Environmentally friendly oil-free technology
- Extremely quiet operation
- All motors are standard TEFC with Class F insulation, UL recognized, CE Compliant
Explosion-Proof motors available
- Custom construction blowers are available
- Rugged die cast aluminum construction

Performance curve for Vacuum pump



Performance curve for Compressor



Dimensions: (inches)	Recommended Accessories:
	<p>Relief valve: VC51Z (Vacuum) PC51Z (Pressure)</p> <p>Filter: ATF-125-1337 (Vacuum) AFS-20-125-10 (Pressure)</p>

Specifications subject to change without notice. Please contact factory for specification updates.

Selection & Ordering Data - Type 3BA1310											
Curve No.	Order No.	Fre- quency Hz	Rated power HP	Input voltage V		Input current A	Permissible total differential pressure		Sound pressure level dB(A)	Weight lbs	
				200D ... 240D	345Y ... 415Y		Vacuum inch H2O	Compressor inch H2O			
3~ 50/60 Hz IP55 insulation material class F											
A 140	3BA1310-7AT26	50	0.94	200D ... 240D	345Y ... 415Y	3.8 D	2.2 Y	-84	96	55	31
A 141	3BA1310-7AT26	60	1.11	220D ... 250D	415Y ... 460Y	3.75D	2.15Y	-100	100	61	31

Suitable for 208 Volt Operation

All curves are rated at 14.7 psia and 68°F ambient conditions and are reported in SCFM referenced to 68°F and 14.696 psia sea level conditions. Curve values are nominal, actual performance may vary by up to 10% of the values indicated. For inlet temperatures above approximately 80 °F or for handling gases other than air, please contact your Airtech sales representative for assistance.