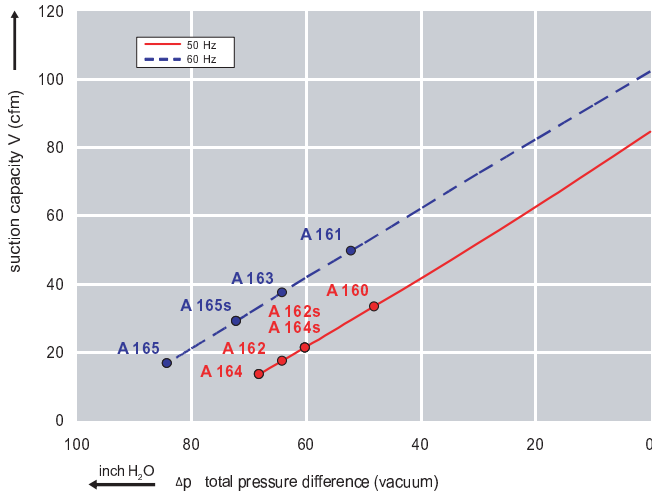




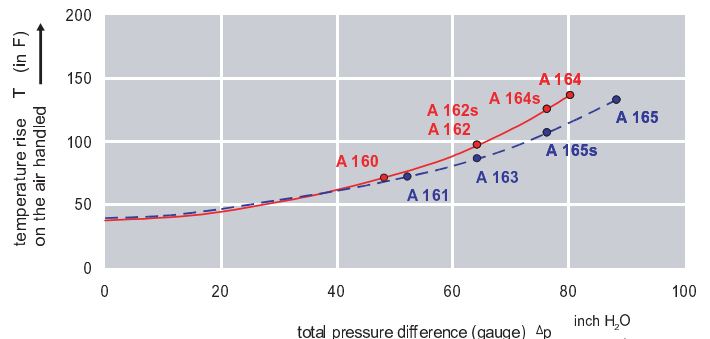
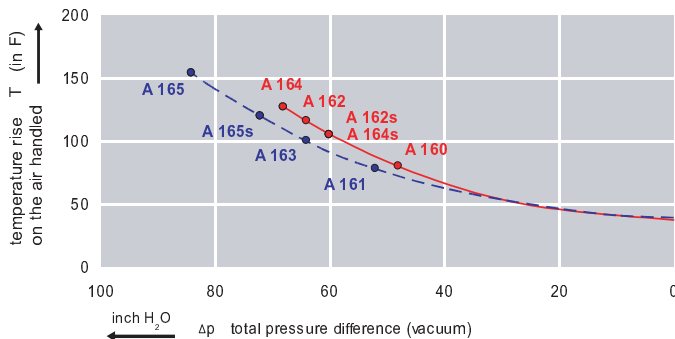
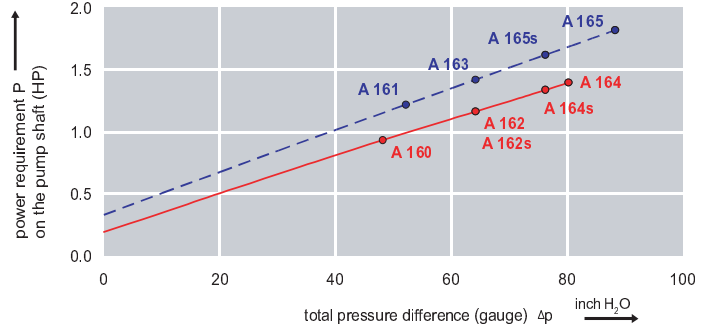
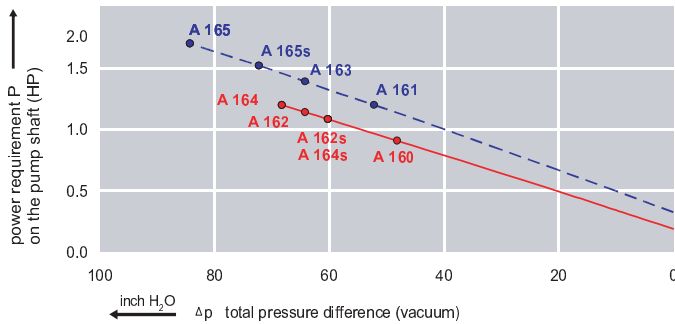
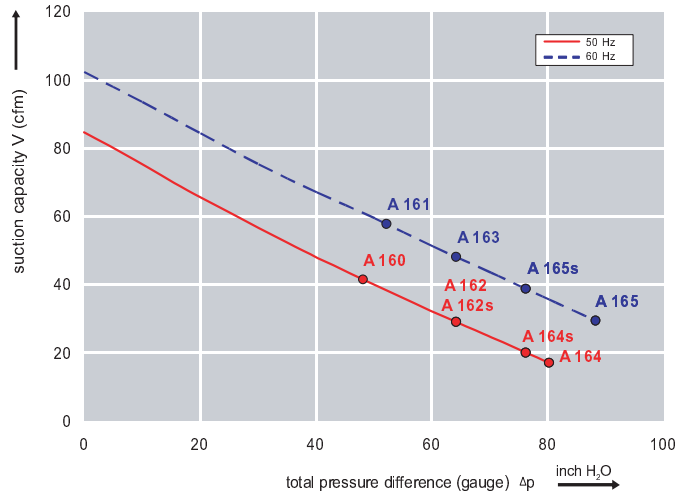
### Features:

- Cooler running, outboard bearing provides maintenance-free operation
- Environmentally friendly oil-free technology
- Extremely quiet operation
- All motors are standard TEFC with Class F insulation, UL recognized, CE Compliant  
*Explosion-Proof motors available*
- Custom construction blowers are available
- Rugged die cast aluminum construction

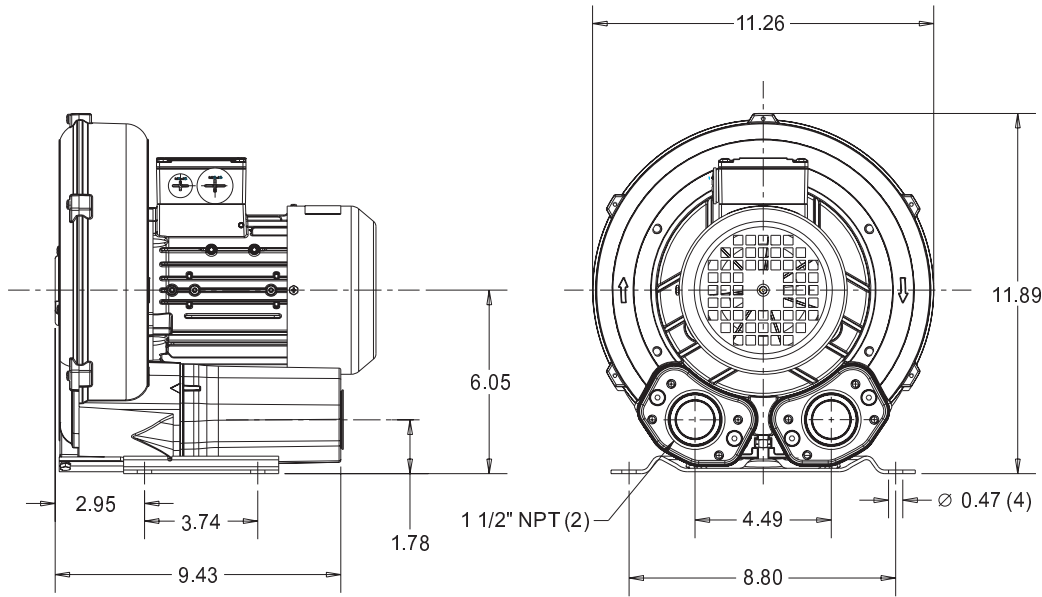
Performance curve for Vacuum pump



Performance curve for Compressor



### Dimensions: (inches)



### Recommended Accessories:

#### Relief valve:

VC51Z (Vacuum)  
PC51Z (Pressure)

#### Filter:

ATF-150-1337  
(Vacuum)  
AFS-20-150-10  
(Pressure)

Specifications subject to change without notice. Please contact factory for specification updates.

### Selection & Ordering Data - Type 3BA1400

Curve No.	Order No.	Fre- quency Hz	Rated power HP	Input voltage		Input current		Permissible total differential pressure		Sound pressure level dB(A)	Weight lbs
				V		A		Vacuum inch H2O	Compressor inch H2O		
<b>3~ 50/60 Hz IP55 insulation material class F</b>											
A 160	3BA1400-7AT06	50	0.94	200D ... 240D	345Y ... 415Y	3.8 D	2.2 Y	-48	48	63	29
A 161	3BA1400-7AT06	60	1.11	220D ... 250D	415Y ... 460Y	3.75D	2.15Y	-52	52	64	29
A 162	3BA1400-7AT16	50	1.14	200D ... 240D	345Y ... 415Y	4.2 D	2.4 Y	-64	64	63	33
A 163	3BA1400-7AT16	60	1.27	220D ... 250D	415Y ... 460Y	4.0 D	2.3 Y	-64	64	64	33
A 164	3BA1400-7AT26	50	1.74	200D ... 240D	345Y ... 415Y	5.7 D	3.3 Y	-68	80	63	35
A 165	3BA1400-7AT26	60	2.01	220D ... 250D	415Y ... 460Y	5.5 D	3.2 Y	-84	88	64	35
<b>1~ 50/60 Hz IP55 with capacitor for continuous operation</b>											
A 164s	3BA1400-7AS25	50	1.47	115	230	13	6.5	-60	76	63	35
A 165s	3BA1400-7AS25	60	1.74	115	230	14	7.0	-72	76	64	35

Suitable for 208 Volt Operation

All curves are rated at 14.7 psia and 68°F ambient conditions and are reported in SCFM referenced to 68°F and 14.696 psia sea level conditions. Curve values are nominal, actual performance may vary by up to 10% of the values indicated. For inlet temperatures above approximately 80 °F or for handling gases other than air, please contact your Airtech sales representative for assistance.