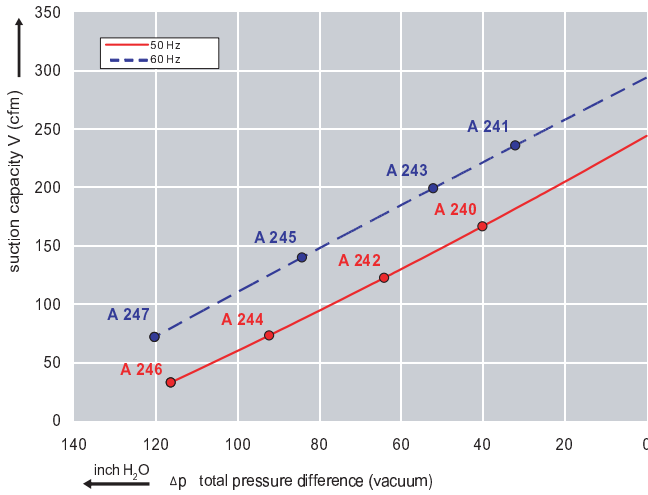


### Features:

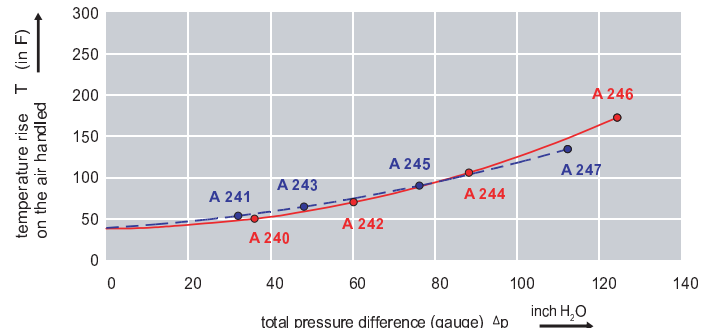
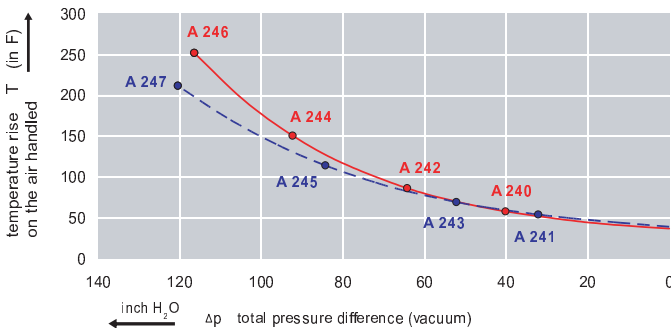
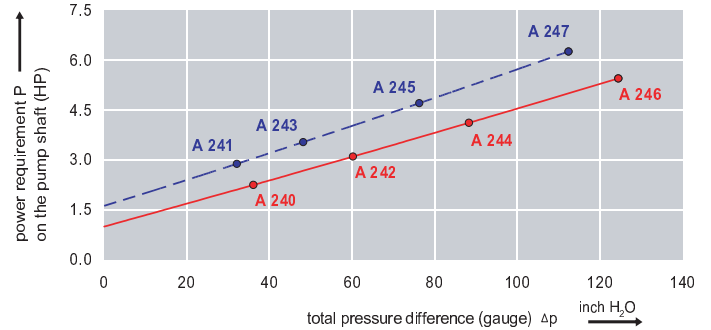
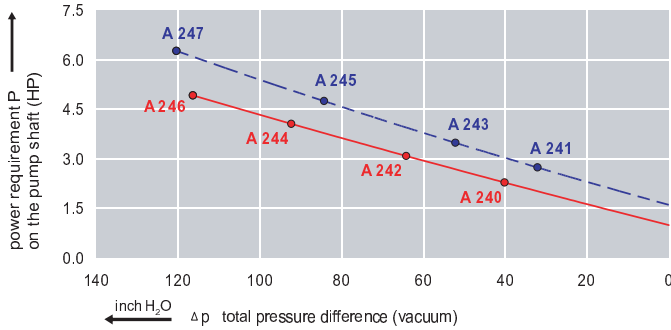
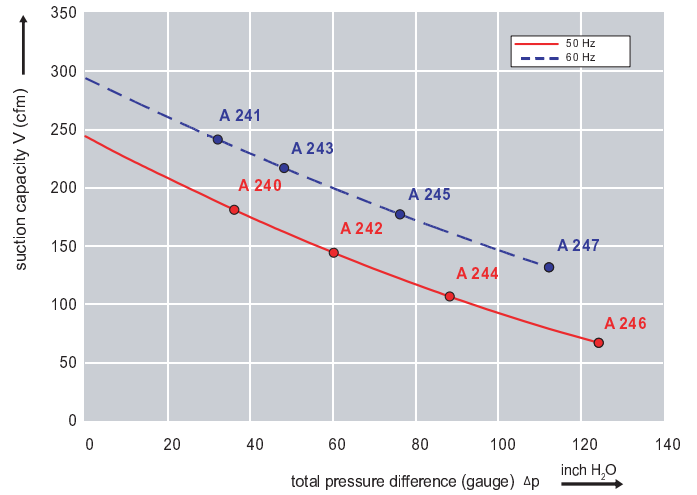


- Cooler running, outboard bearing provides maintenance-free operation
- Environmentally friendly oil-free technology
- Extremely quiet operation
- All motors are standard TEFC with Class F insulation, UL recognized, CE Compliant  
*Explosion-Proof motors available*
- Custom construction blowers are available
- Rugged die cast aluminum construction

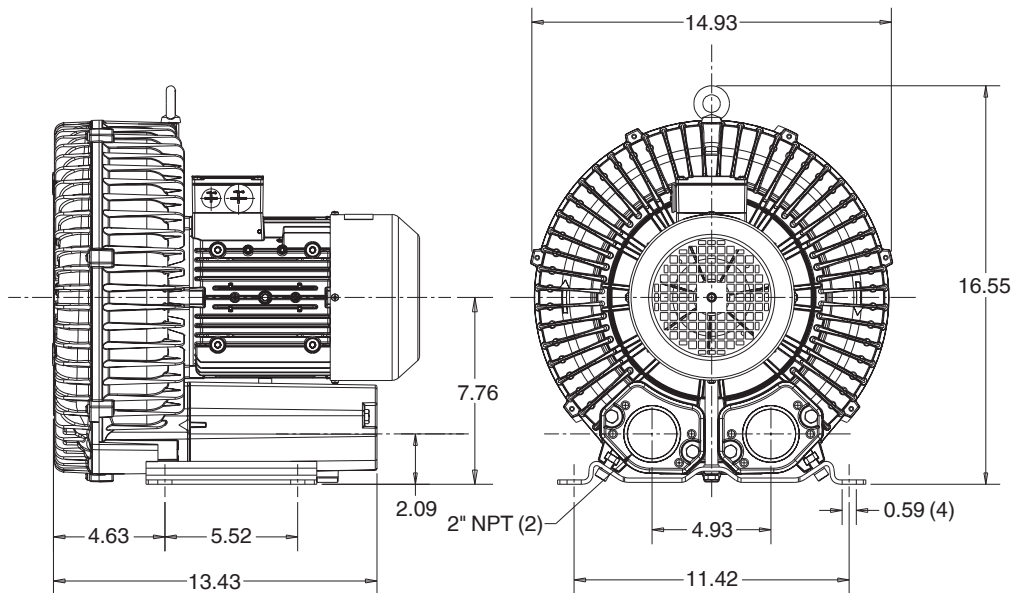
Performance curve for Vacuum pump



Performance curve for Compressor



### Dimensions: (inches)



### Recommended Accessories:

#### Relief valve:

VC61Z (Vacuum)  
PC61Z (Pressure)

#### Filter:

ATF-200-15124/1  
(Vacuum)  
AFS-30-200-10  
(Pressure)

Specifications subject to change without notice. Please contact factory for specification updates.

### Selection & Ordering Data - Type 3BA1630

Curve No.	Order No.	Fre- quency Hz	Rated power HP	Input voltage		Input current		Permissible total differential pressure		Sound pressure level dB(A)	Weight lbs
				V		A		Vacuum inch H2O	Compressor inch H2O		
<b>3~ 50/60 Hz IP55 insulation material class F</b>											
A 240	3BA1630-7AT06	50	2.14	200D ... 240D	345Y ... 415Y	8.5D	4.9Y	-40	36	70	59
A 241	3BA1630-7AT06	60	2.75	220D ... 250D	415Y ... 460Y	7.5D	4.4Y	-32	32	73	59
A 242	3BA1630-7AT16	50	2.95	200D ... 240D	345Y ... 415Y	9.7D	5.6Y	-64	60	70	66
A 243	3BA1630-7AT16	60	3.42	220D ... 250D	415Y ... 460Y	9.0D	5.3Y	-52	48	73	66
A 244	3BA1630-7AT26	50	4.02	200D ... 240D	345Y ... 415Y	12.5D	7.2Y	-92	88	70	77
A 245	3BA1630-7AT26	60	4.62	220D ... 250D	415Y ... 460Y	12.6D	7.3Y	-84	76	73	77
A 245	3BA1630-7AT25	60	4.60		575		5.8Y	-84	76	73	77
A 246	3BA1630-7AT36	50	5.36	200D ... 240D	345Y ... 415Y	15.6D	9.0Y	-116	124	70	95
A 247	3BA1630-7AT36	60	6.17	220D ... 250D	415Y ... 460Y	16.5D	9.8Y	-120	112	73	95

Suitable for 208 Volt Operation

All curves are rated at 14.7 psia and 68°F ambient conditions and are reported in SCFM referenced to 68°F and 14.696 psia sea level conditions. Curve values are nominal, actual performance may vary by up to 10% of the values indicated. For inlet temperatures above approximately 80 °F or for handling gases other than air, please contact your Airtech sales representative for assistance.