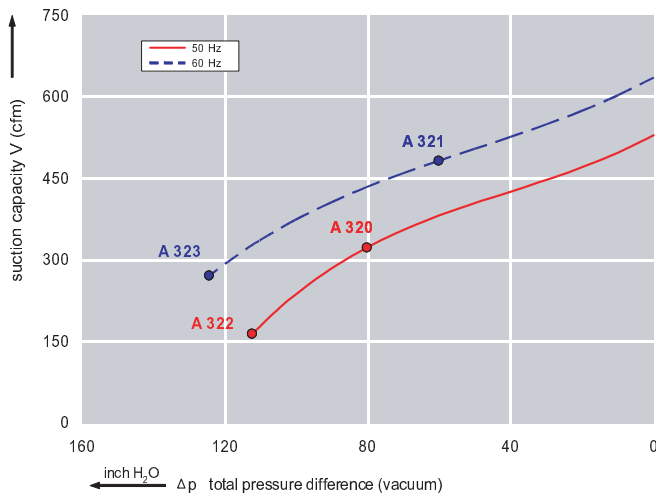




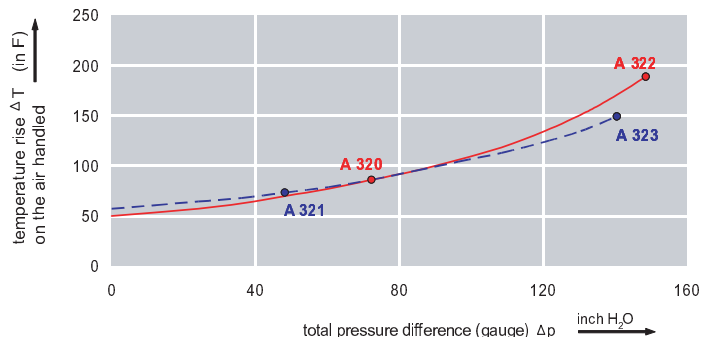
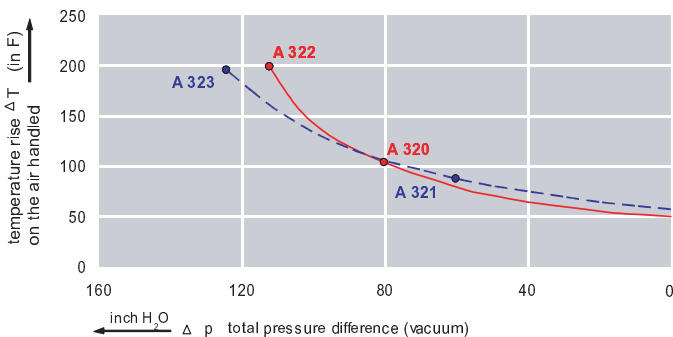
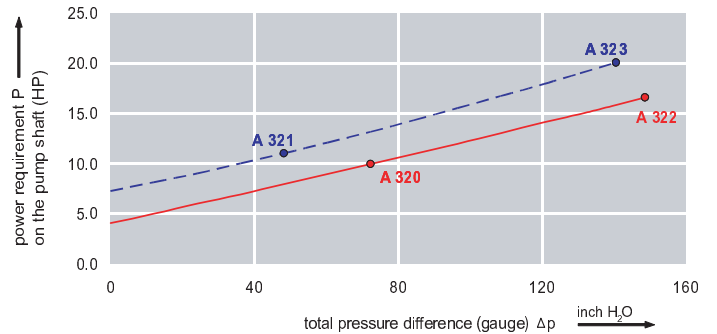
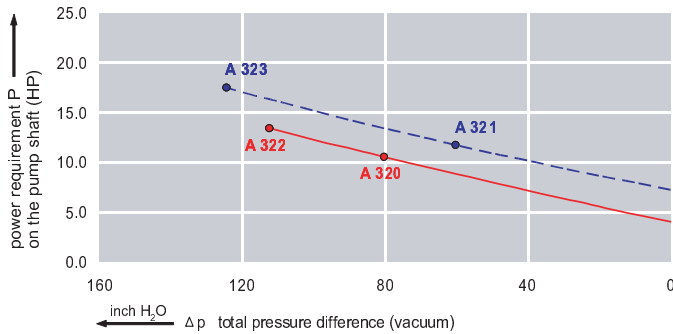
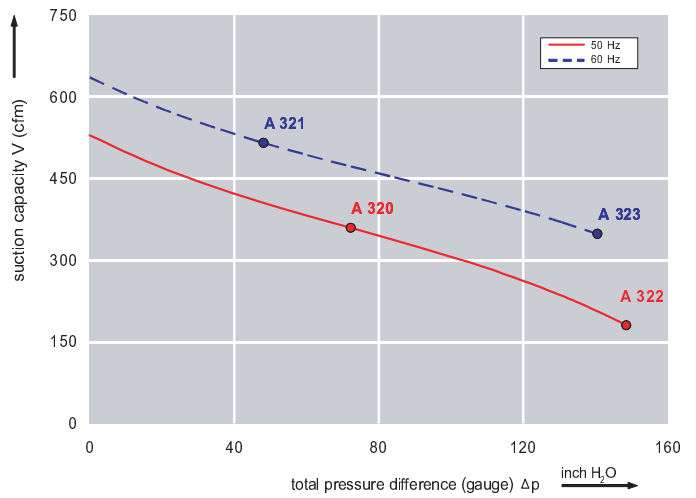
Features:

- Cooler running, outboard bearing provides maintenance-free operation
- Environmentally friendly oil-free technology
- Extremely quiet operation
- All motors are standard TEFC with Class F insulation, UL recognized, CE Compliant
Explosion-Proof motors available
- Custom construction blowers are available
- Rugged die cast aluminum construction

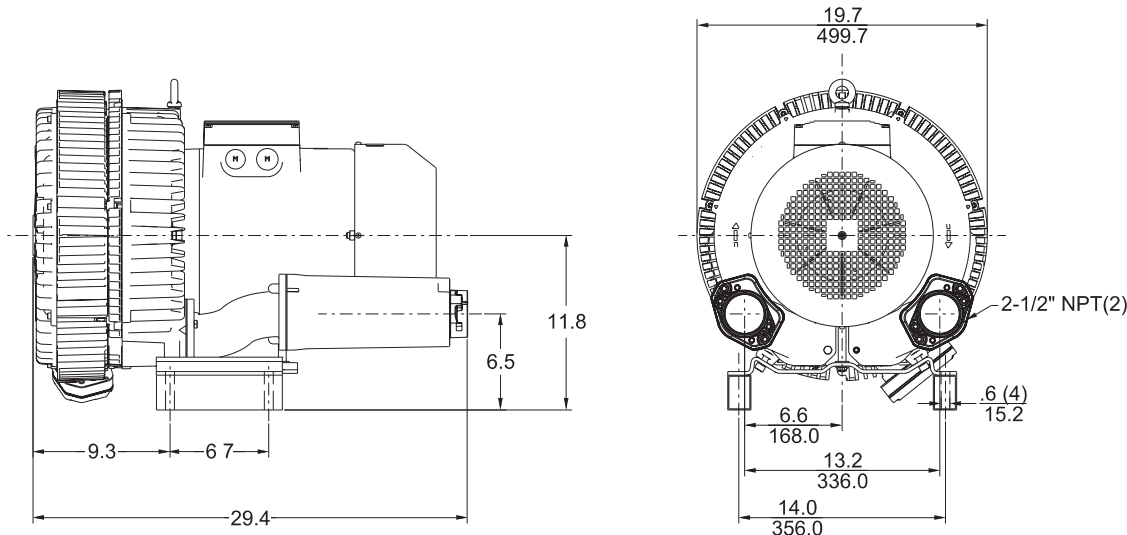
Performance curve for Vacuum pump



Performance curve for Compressor



Dimensions: (inches)



**Recommended
Accessories:**

Relief valve:

- VC91Z (Vacuum)
- PC91Z (Pressure)

Filter:

- ATF-300-21138 (Vacuum)
- AFS-230-300-10 (Pressure)

Specifications subject to change without notice. Please contact factory for specification updates.

Selection & Ordering Data - Type 3BA1840

Curve No.	Order No.	Fre- quency Hz	Rated power HP	Input voltage		Input current A	Permissible total differential pressure ²⁾		Sound pressure level ³⁾ dB(A)	Weight ca. lbs	
				V			Vacuum inch H2O	Compressor inch H2O			
3~ 50/60 Hz IP55 insulation material class F											
A 320	3BA1840-7AT26	50	10.05	200D ... 240D	345Y ... 415Y	29.0D	16.7Y	-80	72	74	352
A 321	3BA1840-7AT26	60	11.52	220D ... 250D	415Y ... 460Y	27.5D	15.0Y	-60	48	78	352
A 322	3BA1840-7AT36	50	14.74	200D ... 240D	345Y ... 415Y	48.5D	28.0Y	-112	149	74	441
A 323	3BA1840-7AT36	60	16.98	220D ... 250D	415Y ... 460Y	50.2D	29.0Y	-124	141	78	441

Suitable for 208 Volt Operation

All curves are rated at 14.7 psia and 68° F ambient conditions and are reported in SCFM referenced to 68° F and 14.696 psia sea level conditions. Curve values are nominal, actual performance may vary by up to 10% of the values indicated. For inlet temperatures above approximately 80 °F or for handling gases other than air, please contact your Airtech sales representative for assistance.