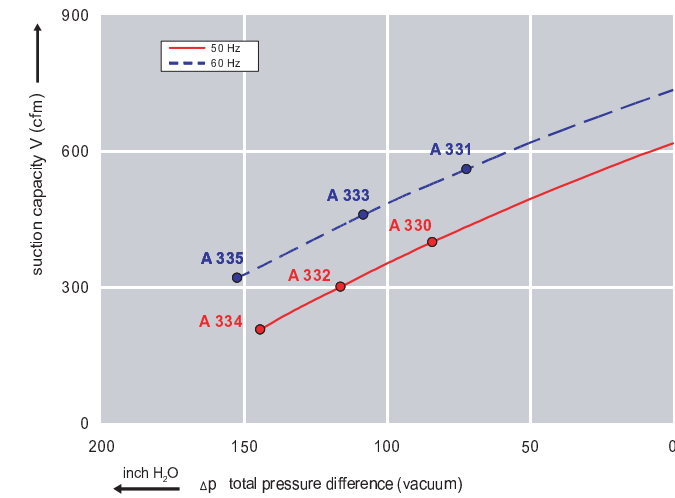


Features:

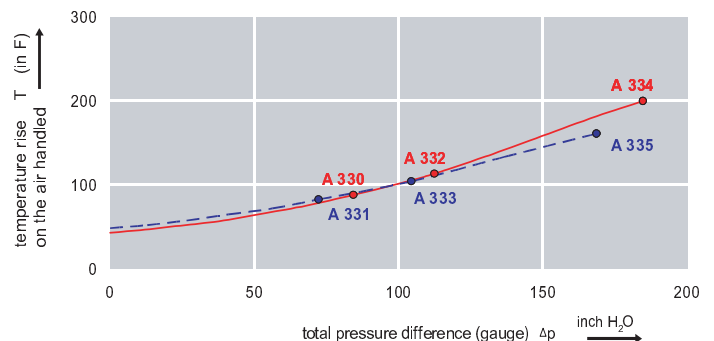
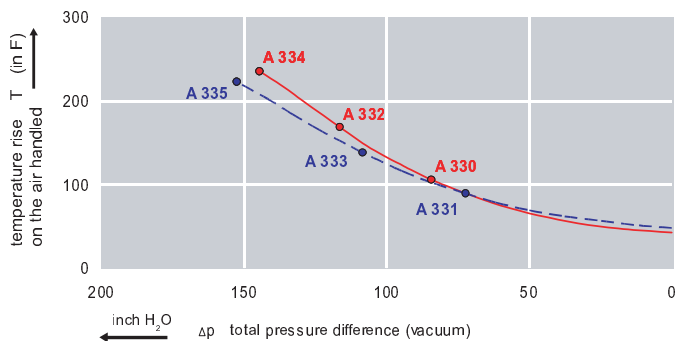
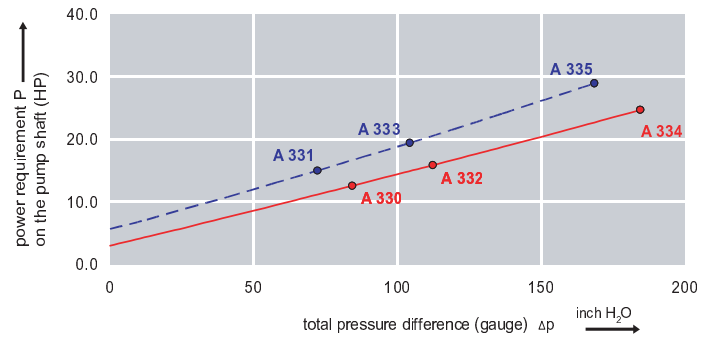
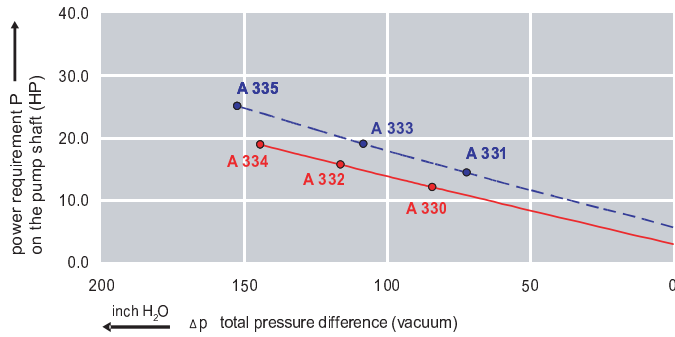
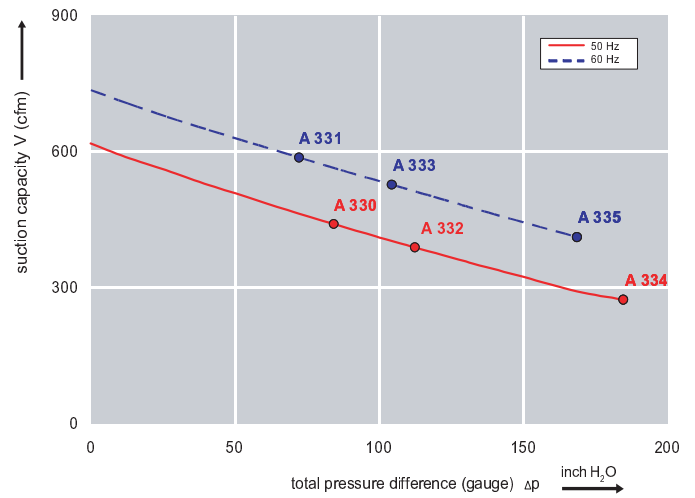


- Cooler running, outboard bearing provides maintenance-free operation
- Environmentally friendly oil-free technology
- Extremely quiet operation
- All motors are standard TEFC with Class F insulation, UL recognized, CE Compliant
Explosion-Proof motors available
- Custom construction blowers are available
- Rugged die cast aluminum construction

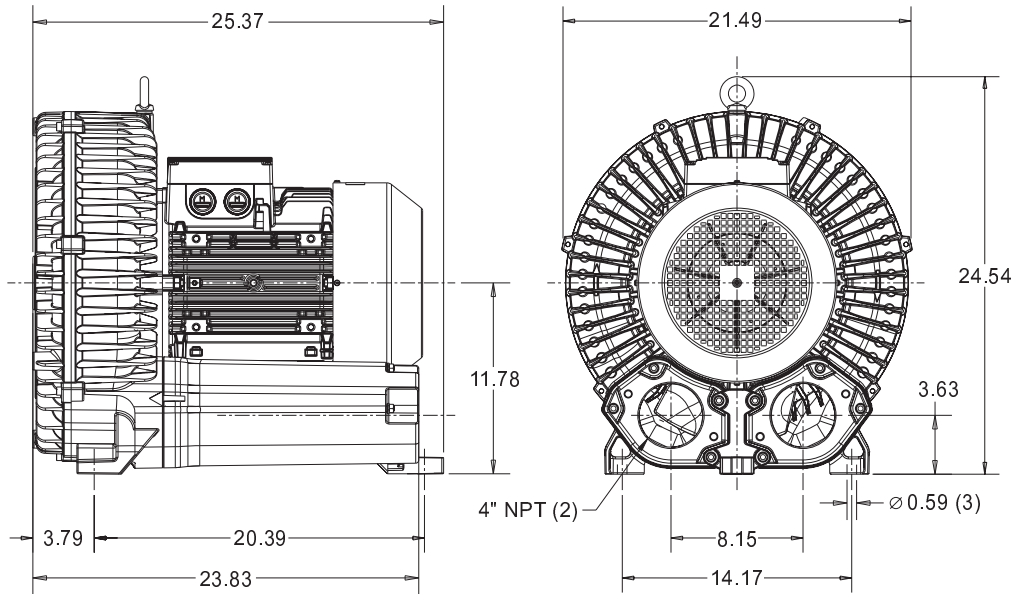
Performance curve for Vacuum pump



Performance curve for Compressor



Dimensions: (inches)



Recommended Accessories:

Relief valve:

VC100Z
(Vacuum)

PC100Z
(Pressure)

Filter:

ATF-400-21138
(Vacuum)

AFS-234-400-10
(Pressure)

Specifications subject to change without notice. Please contact factory for specification updates.

Selection & Ordering Data - Type 3BA1900

Curve No.	Order No.	Fre- quency Hz	Rated power HP	Input voltage		Input current		Permissible total differential pressure		Sound pressure level dB(A)	Weight lbs
				V		A		Vacuum inch H2O	Compressor inch H2O		
3~ 50/60 Hz IP55 insulation material class F											
A 330	3BA1900-7AT06	50	10.72	200D ... 240D	345Y ... 415Y	31.5D	18.2Y	-76	76	74	265
A 331	3BA1900-7AT06	60	12.06	220D ... 250D	415Y ... 460Y	31.5D	18.2Y	-60	56	79	265
A 332	3BA1900-7AT16	50	16.76	200D ... 240D	345Y ... 415Y	48.5D	28.0Y	-116	112	74	295
A 333	3BA1900-7AT16	60	19.44	220D ... 250D	415Y ... 460Y	50.0D	29.0Y	-108	104	79	295
A 334	3BA1900-7AT36	50	24.80	200D ... 240D	345Y ... 415Y	64.5D	37.0Y	-145	185	74	314
A 335	3BA1900-7AT36	60	28.55	220D ... 250D	415Y ... 460Y	68.0D	39.0Y	-153	169	79	314

Suitable for 208 Volt Operation

All curves are rated at 14.7 psia and 68° F ambient conditions and are reported in SCFM referenced to 68° F and 14.696 psia sea level conditions. Curve values are nominal, actual performance may vary by up to 10% of the values indicated. For inlet temperatures above approximately 80 °F or for handling gases other than air, please contact your Airtech sales representative for assistance.