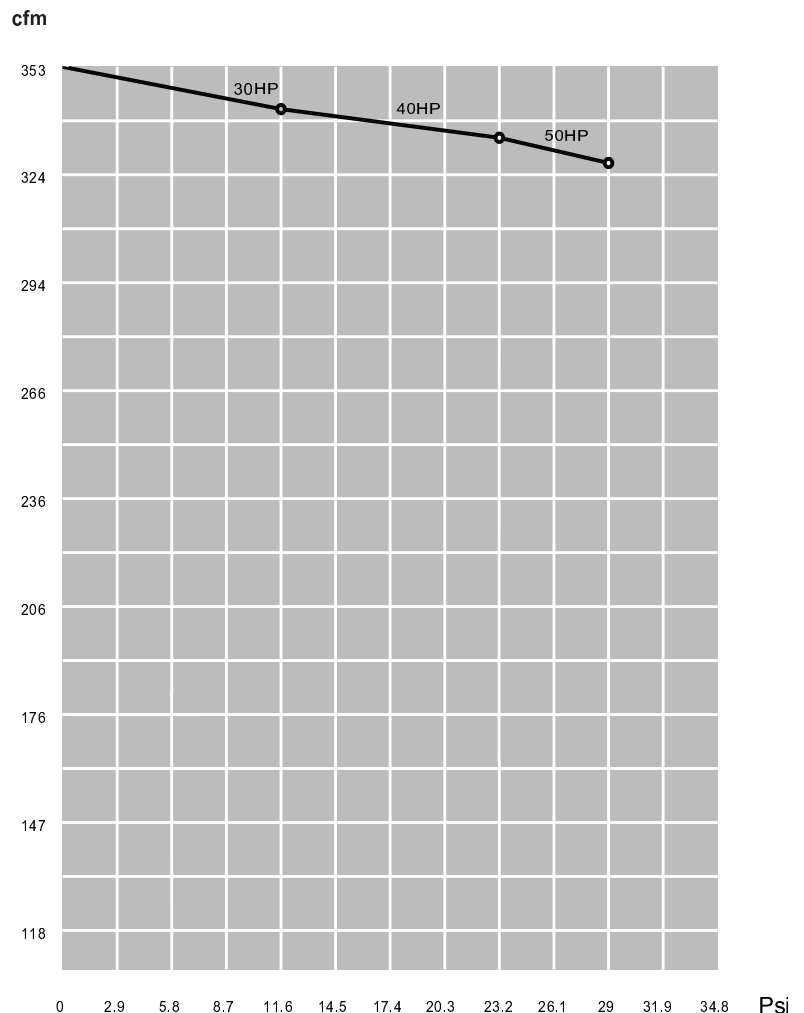




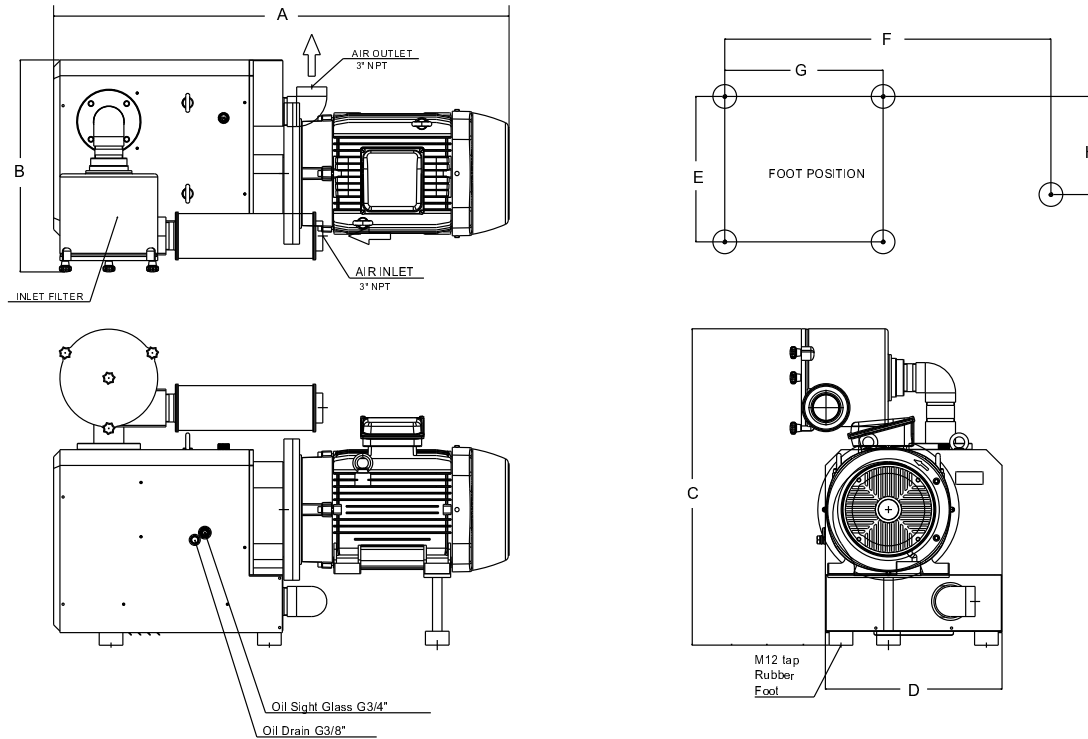
The Airtech PCX positive displacement rotary claw design is air cooled, dry-running and non-contacting. These features, along with quality construction results in a pressure pump that is extremely high in reliability and a long service life. The non-contact design eliminates internal wear and maintenance. No water levels to check due to air-cooled operation and no sealing or lubricating oil is needed in the pumping chamber.

The claw shaped rotors inside the pump housing rotate in opposite directions, compressing the air and discharging through a silencer to the atmosphere. The two rotors are synchronized by gears that are oil lubricated to facilitate a long gear life.

- Non-contact design
- Dry (oil-free) pumping chamber
- Air-cooled & Direct driven
- Simple, modular construction
- Suitable for variable speed applications



Dimensions



	A	B	C	D	E	F	G	H
PCX515 (30 HP)	51.3	26.5	39.5	22.0	18.1	38.5	19.8	12.2
PCX515 (40 HP)	55.4	26.5	39.5	22.0	18.1	39.2	19.8	12.2
PCX515 (50 HP)	56.9	26.5	39.5	22.0	18.1	39.2	19.8	12.2

Performance Data - PCX515

Capacity (cfm)	353
Ultimate pressure (psig)	11.6/23.2/29
Motor Rating (HP)	30/40/50
Speed (RPM)	3450
Voltage	208-230/460
Oil Capacity (gear box- qts.)	0.75
Avg. Noise Level-dB(A)	83
Inlet/Outlet Connections	3"
Weight (lbs.) *	Consult factory

* dependent upon motor mfg.