

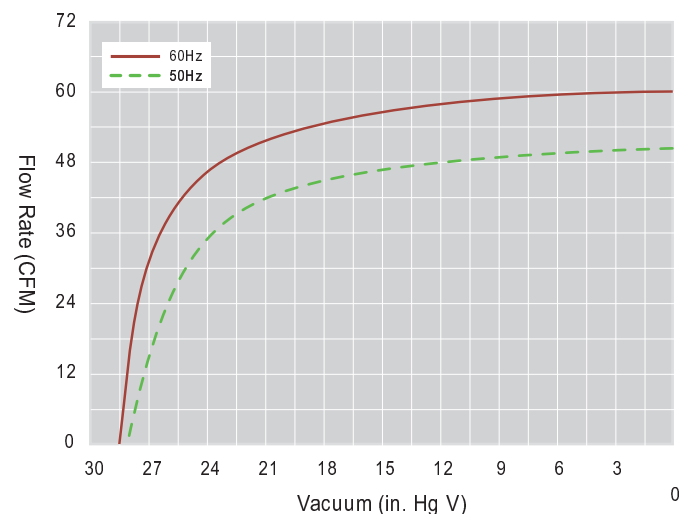


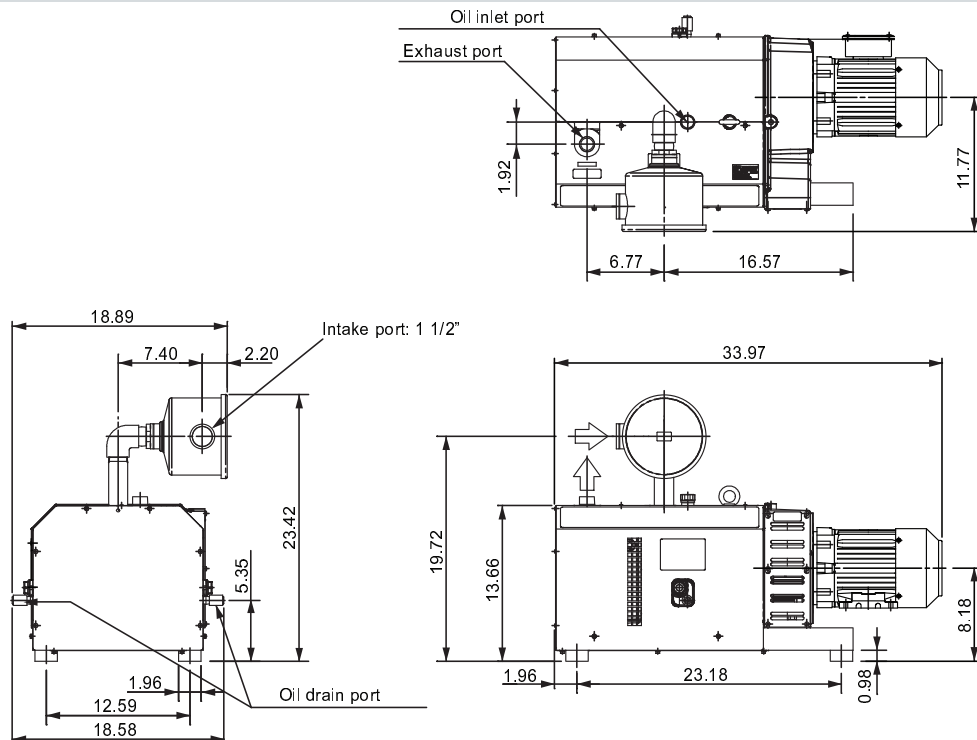
Quality construction and design features make KCP positive displacement rotary claw vacuum pumps extremely reliable and easy to maintain. The KCP's non-contact design reduces internal wear, and air-cooled operation eliminates the need for cooling liquid. The unit is also dry-running, so no sealing or lubricating oil is needed in the pumping chamber.

Claw shaped rotors inside the pump housing rotate in opposite directions, compressing air and discharging to the atmosphere through a silencer. The two rotors are synchronized by gears that are oil lubricated to facilitate a long gear life.

- Non-contact design
- Dry (oil-free) pumping chamber
- Air-cooled & Direct driven
- Simple, modular construction
- Suitable for variable speed applications

Performance Curves



Dimensions: (inches)

Specifications

Power Frequency	50 Hz	60 Hz
Capacity (CFM)	50	60
Continuous Operating Vacuum (in. Hg)	25.1	25.1
Ultimate Vacuum (in. Hg)	26.6	27.8
Piping Connection Size (NPT)	1 1/2"	1 1/2"
Output Power (HP/RPM)	3 HP/2950 RPM	3 HP/3500 RPM
Rated Voltage	200V/400V	208-230V/480V
Weight	374 lb.	374 lb.
Operating Noise Level	74 dB	75 dB